

Residential Fence Regulations

City of Cape Coral Land Development Code, Article 5, Section 5.2.7

General Fence Regulations:

- For Single-Family Homes and Duplexes, No part of a fence shall be located in front of the forward most part of the primary structure - (See 'Figure 1')
- Fences constructed within the rear 20 feet of the rear property abutting waterways must be open mesh above 3 feet in height - (See 'Figure 2')
- Double frontage other than corner lots shall meet front yard regulations on all adjacent streets (See 'Figure 6')
- Fence maximum height - 6 feet; unless the residential property abuts a commercial property, then 8 feet is allowed
- A property must be improved to be permitted for a fence
- Materials are restricted in the area of a property located in a Public Easement

***Further Restrictions on fences may apply if underground drainage facilities exist in the Public Easement.*

Multi-Family Residential Fence Regulations (See 'Figure 3'):

- Developments over 1 acre may construct a fence or wall around the entire perimeter of the property or in a location not otherwise allowed in other residential zoned areas.
- Fences shall not be located within a visibility triangle



Single Family Residential Approved Materials
Wood (Decay Resistant or Pressure Treated)
Concrete Block with Stucco (CBS)
Concrete with or without Stucco
Stone or Brick, Including Cast Stone or Brick
Wrought Iron
Aluminum
Galvanized Steel Panels painted with Alkali Resistant Coatings (e.g. bituminous paint/mothacrylate lacquer)
Chain-link without Slats
Plastic or Vinyl

Multi-Family Residential Approved Materials
Wood (Decay Resistant or Pressure Treated)
Concrete Block with Stucco (CBS)
Reinforced Concrete with or without Stucco
Stone or Brick, Including Cast Stone or Brick
Wrought Iron

Materials Approved for Public Utility or Drainage Easement
Wood (Decay Resistant or Pressure Treated)
Aluminum
Chain-link without Slats
Plastic or Vinyl

Residential Fence Regulations Visual Guide

Figure 1: Single-Family Home Site

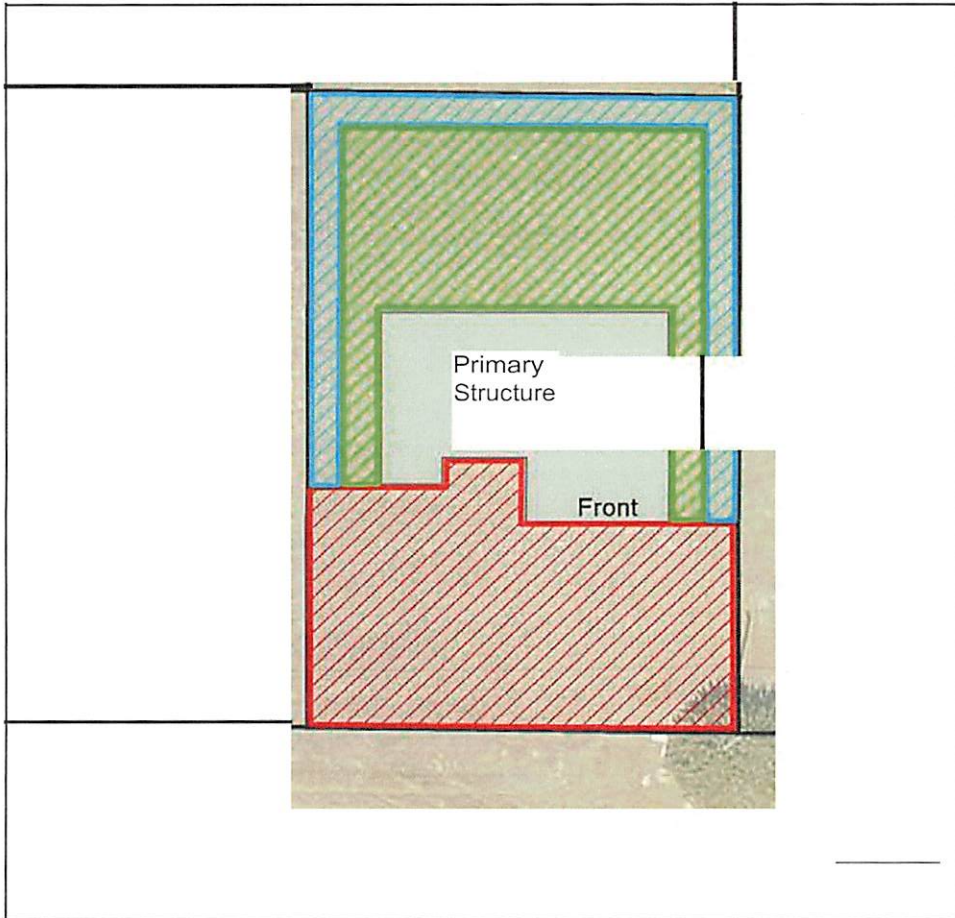


Figure 2: Water Front Single Family Home Site

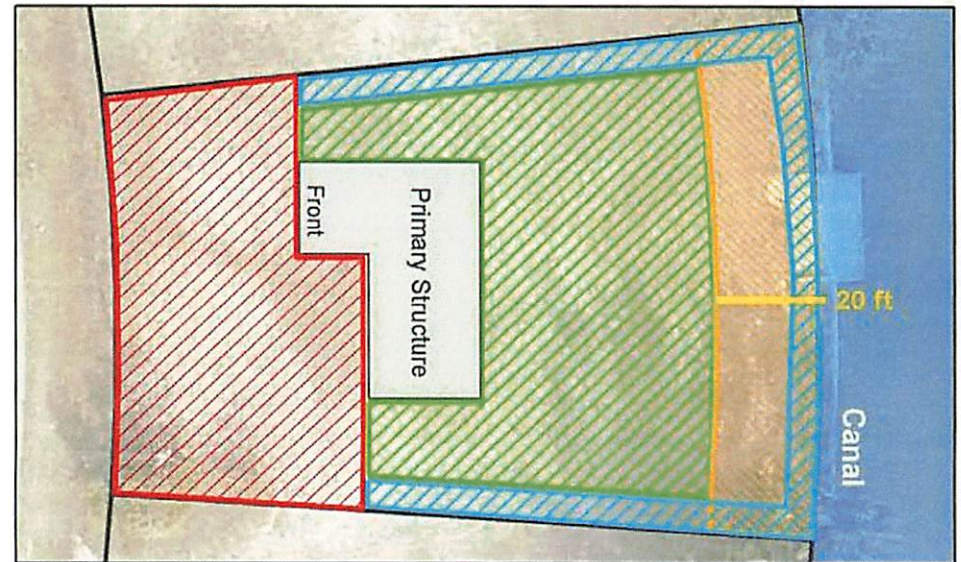
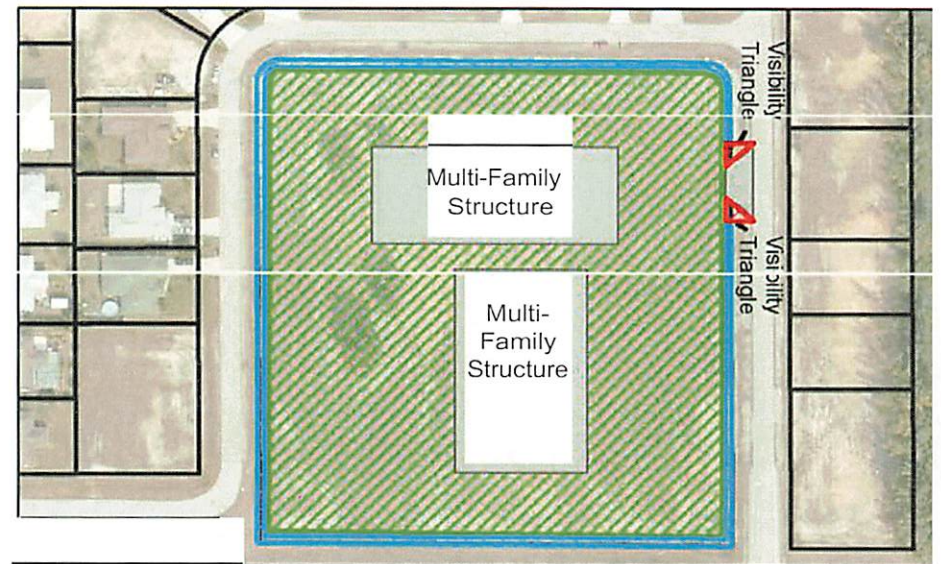


Figure 3: Multi-Family Home Site



Legend





-  No Fences or Walls Allowed
-  Fence Materials Restricted to Those Allowed in Public Easement
-  Materials Above 3 ft Must be Open Mesh
-  A Fence May be Constructed of Any City-Approved Materials

Figure 4. Single-Family Home Site on an Angle

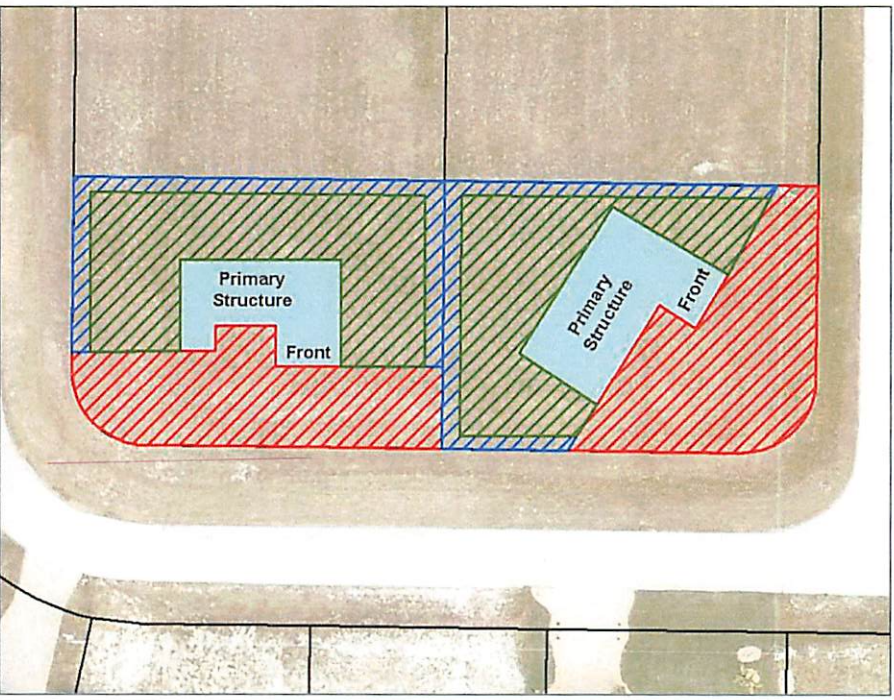


Figure 6. Single-Family Home on a Double Frontage Parcel

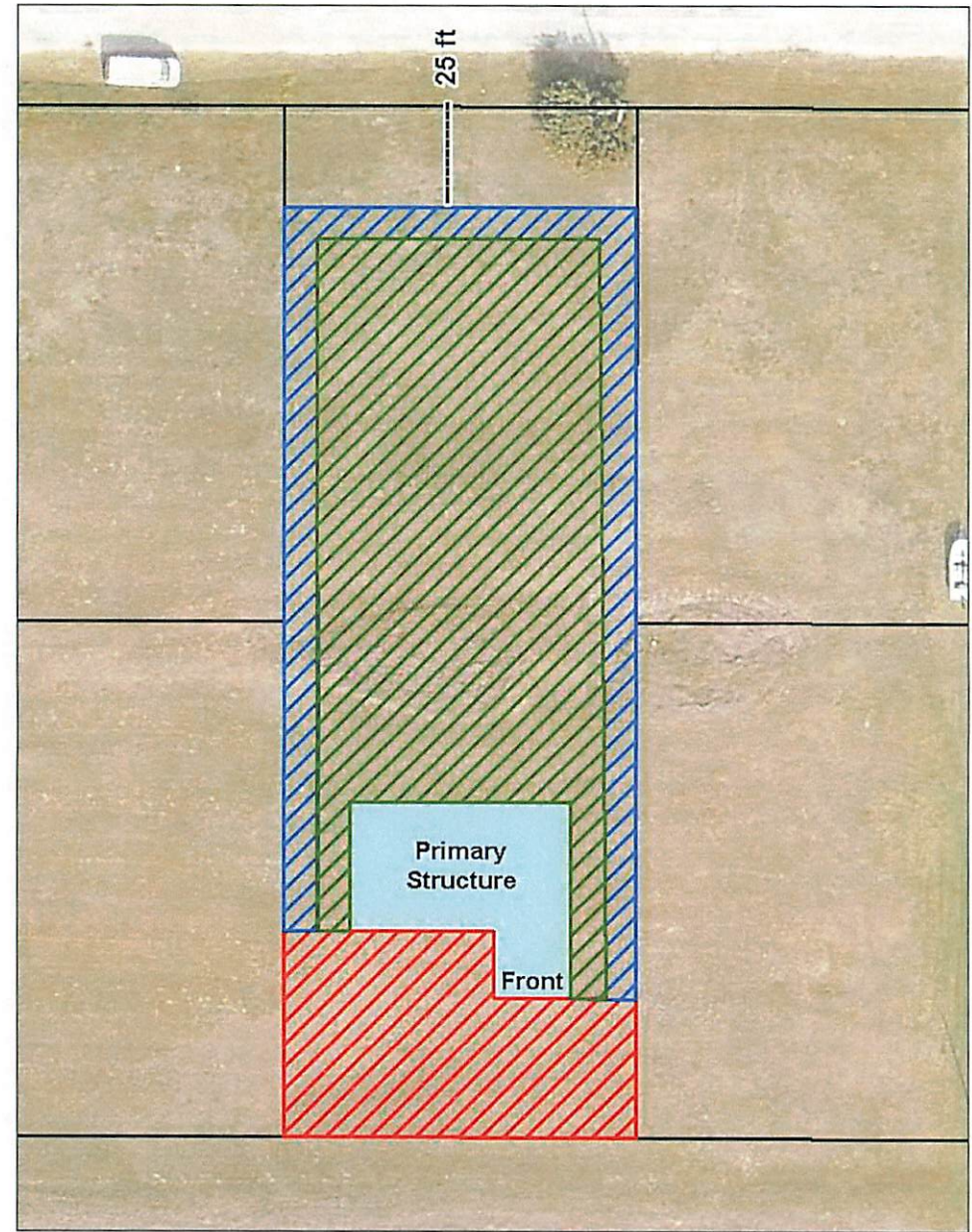


Figure 5. Single-Family Home on a 4 Lot Parcel

